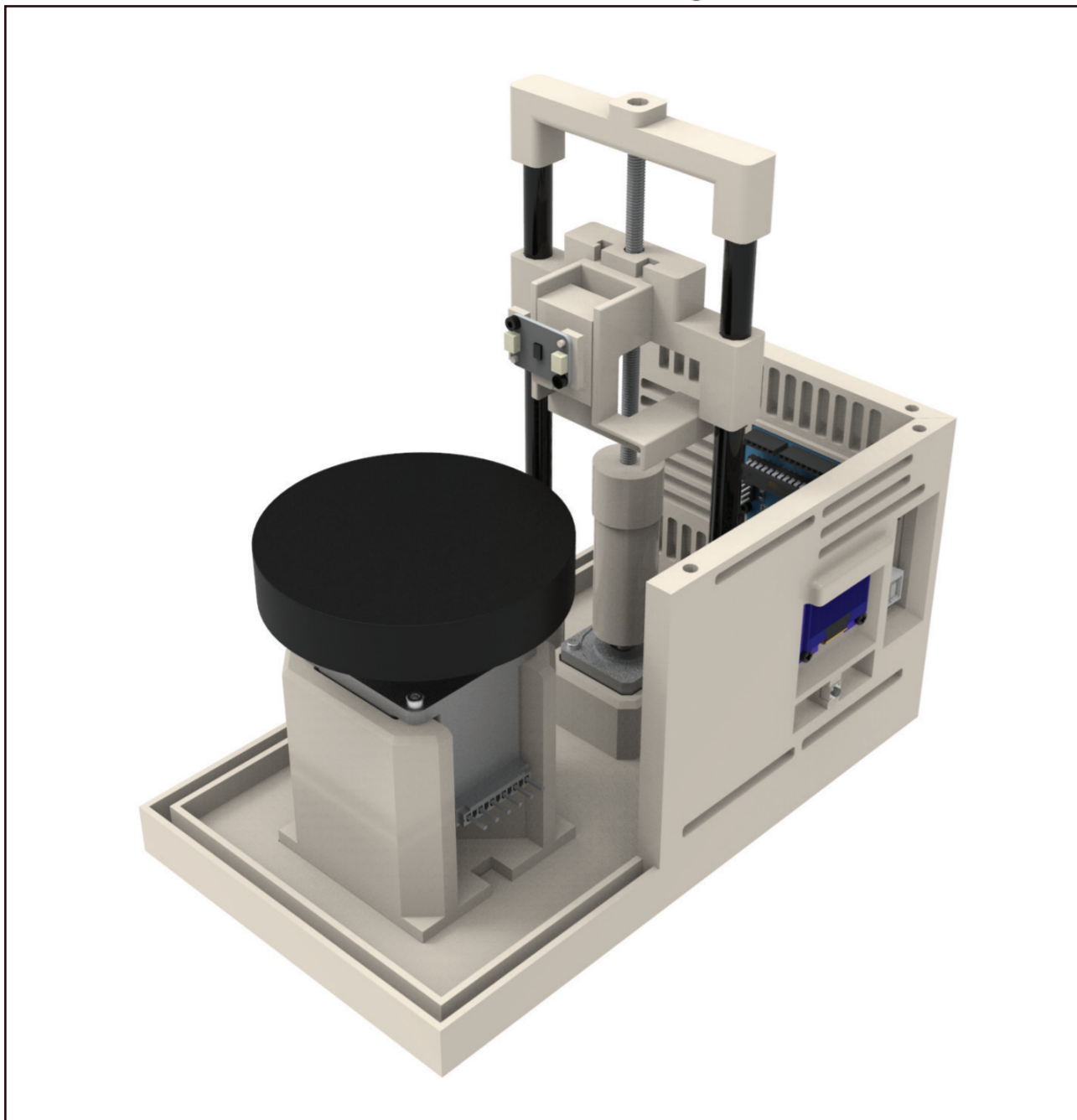


3D Scanner

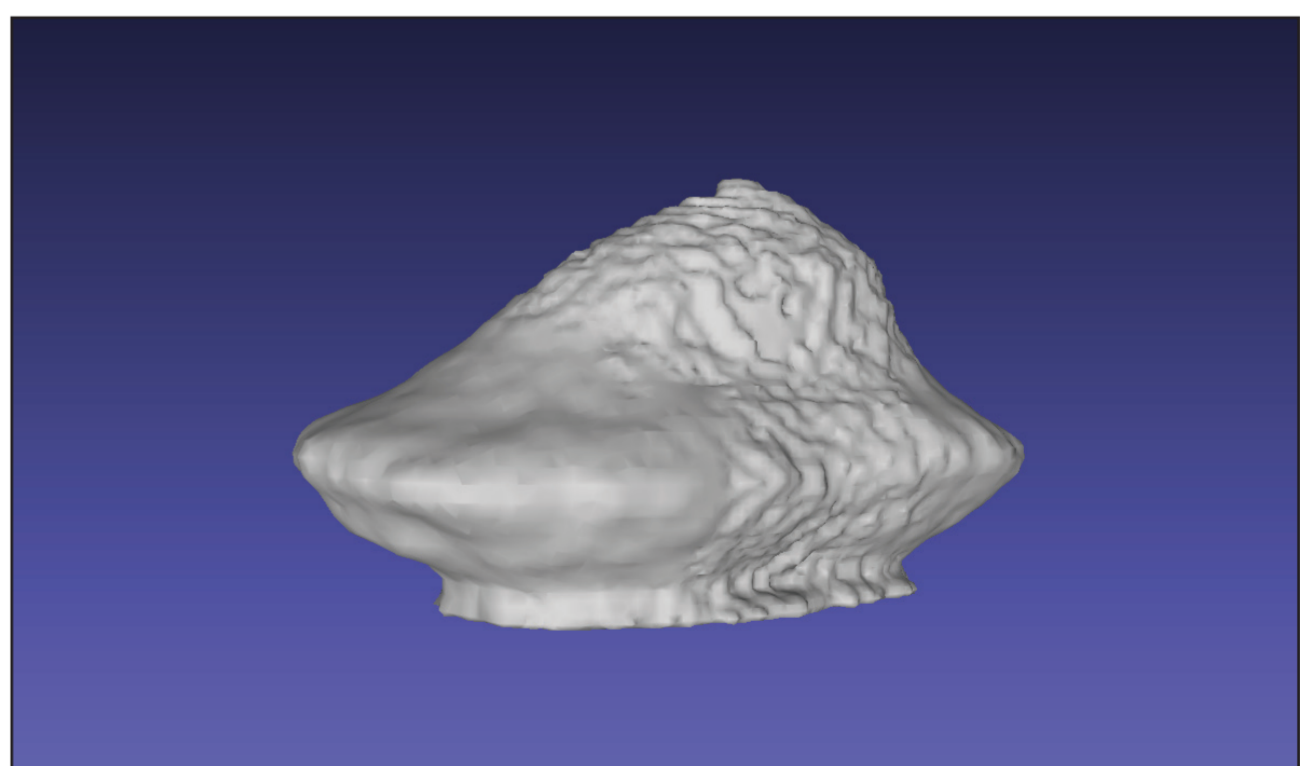
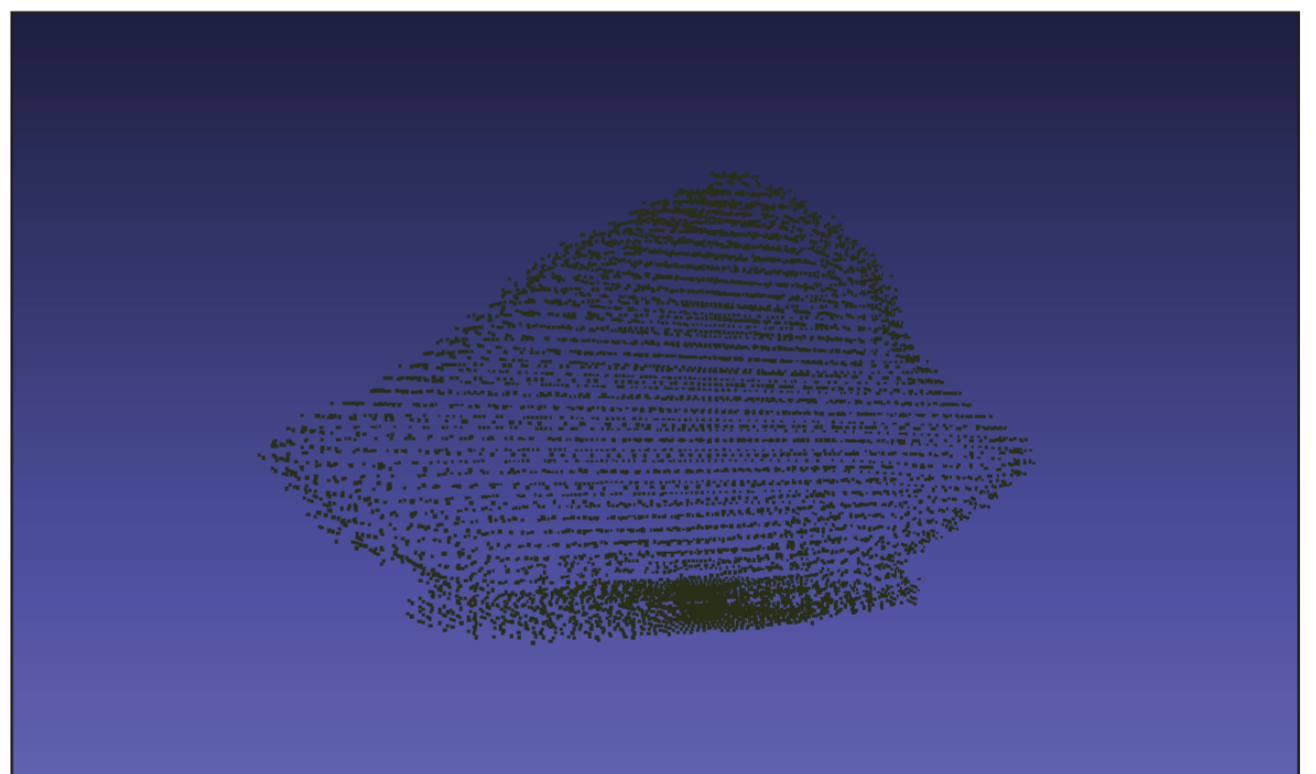
Scanning small objects and recreating them visually as a mesh in a computer



CAD render of the 3D scanner



The physical prototype



A stone model of a French madeleine cake is scanned and visualized in the computer

Carl Egenäs
Axel Sacilotto

egenas@kth.se
axelsac@kth.se



KTH Industriell teknik
och management

MF133X 2021
Supervisor: Nihad Subasic