



Picture from: <https://intra.kth.se/en/aktuellt/nyheter/jag-vag-mot-atergang-all-campus-i-hos-1.1068932>

Despite the shortening of daylight hours as the autumn sets in, I have found October to be a month of renewed energy. It is a pleasure to finally see our campuses populated by students and staff. Faculty; research, teaching, and administrative staff; and students define KTH and enable us to realize our core activities - research and teaching. I am convinced that the best way to continue developing these activities is through daily face-to-face interactions at our place of work. On-site must soon become our standard mode of operation, rather than the remote-working exception which we have had to accept during the pandemic. I, therefore, expect to see you all regularly back on-site as soon as possible!

This is not to say that we should ignore the benefits of advances in digital meeting technology. Indeed, it is possible that technical advances may require us to re-evaluate our current ideas of individual physical space, and perhaps this will lead to new plans for School premises. I look forward to constructive discussions on this subject... on-site, of course!

Sandra Di Rocco
Professor
Dean of the Faculty of Engineering Sciences

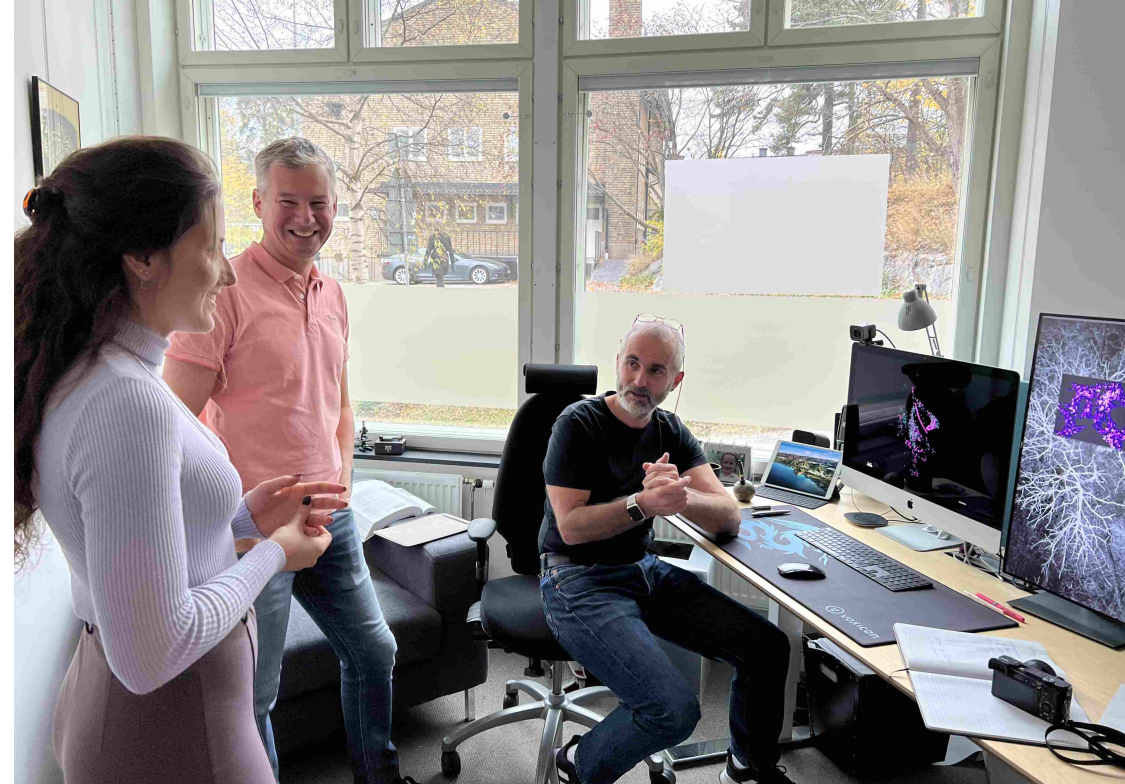


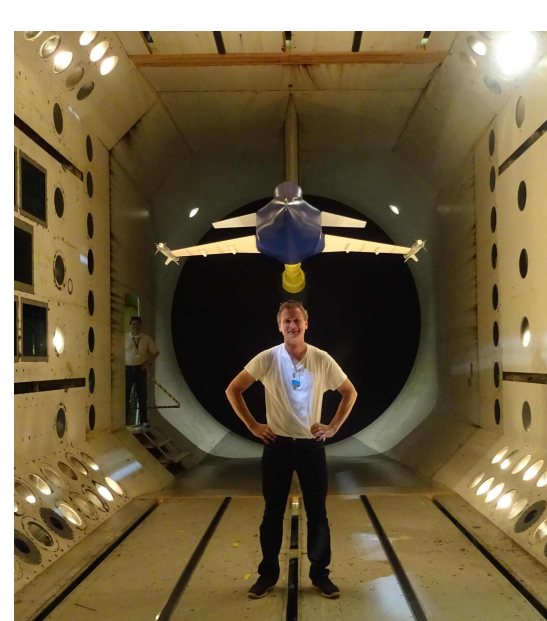
Photo by: Danaï Deligeorgaki, KTH

Advanced Light Microscopy at SciLife Lab

The team of the SCI newsletter has visited the ALM at SciLife Lab and talked with a team of leading scientists in the field of light microscopy, experts in various equipment located in the lab. The article features interviews, pictures, as well as one out of only 7 instruments available worldwide available at ALM, developed by the Nobel prize-winning Eric Betzig.

[Watch a short film about the ALM Lab made by KTH](#)

[Read the article](#)



Interview with Ulf Ringertz about CERO project and more

We talked with professor Ulf Ringertz about the CERO project and his contribution to it, as well as his interesting work with NASA in aeroelasticity.

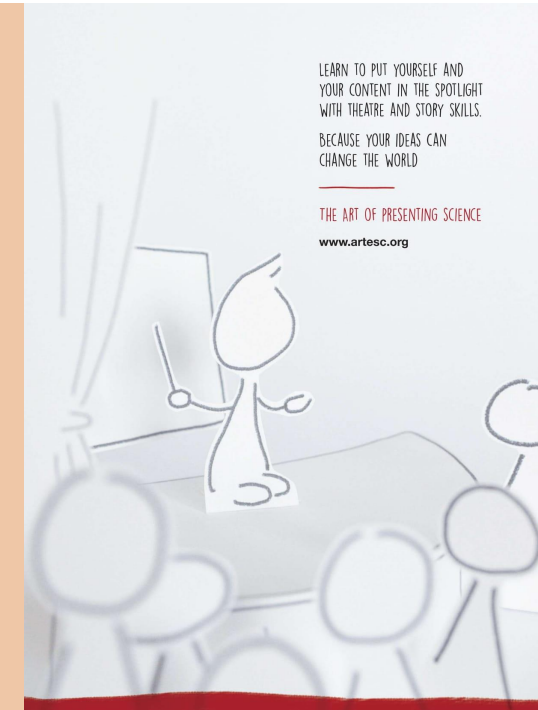
[More](#)



Interview with Susanna Lundgren, re-appointed as affiliated faculty

We interviewed Susanna, who works at SIEMENS Energy AB as an expert within blade dynamics and contact mechanics, and was recently re-appointed as affiliated faculty in Solid Mechanics.

[More](#)



SCI PhD Student Council

We are hosting Artesc, a company specialising on bringing skills from the arts to communicating science. Their experts will offer two workshops that are guaranteed to improve your performance on presenting and writing:

November 8, 10-12: The art of presenting science,

November 9, 10-12: The art of scientific writing.

Keep an eye on your emails for the invitation coming soon!



KTH Energy Dialogue 2021 – Science for Sustainability & Impact of Research

The KTH Energy Dialogue is an annual event arranged by the KTH Energy Platform. It is a celebration of energy research and an inclusive meeting point for dialogues on scientifically-based solutions aiming at the sustainable development goals (SDGs).

The event will be live at *KTH Campus, Nymble, on Thursday 18 November, 13-16* (networking lunch and poster session from 11.30). More information and registration [here](#)

Submit your energy poster to the poster competition and win a full communication training day!

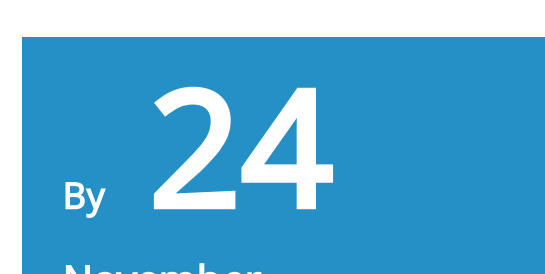
[More info](#)



New web-based system for reporting and investigating occupational injuries, incidents and risks

On November 1, a web-based system will be introduced at KTH to handle occurrences in the work environment such as incidents, risks, and work injuries. IA – Occupational Health and Safety Information System - is a system owned by Afa Försäkring and used by many Swedish organisations and companies. Here you can find more information about the IA system.

[Read more](#)



Get an industry mentor this spring

In the KTH Innovation mentor program, you get an engaged mentor with industry experience who will guide you from research to application and commercialization. If you have an idea or a research result with potential for broader use, this program will bring you new perspectives and concrete tips on the way.

Apply to the KTH Innovation mentor program by 24 November

[Apply here!](#)

Scholarships and Grants for KTH Researchers, staff and students

As a student, teacher, researcher or employee at KTH, you are eligible to apply for scholarships from the KTH affiliated foundations as well as many Swedish foundations and organisations.

[Information about opportunities from the KTH affiliated foundations](#)

Nominate a candidate for the position of President

All employees and students at KTH are invited to contribute in the recruitment process of a new President by nominating one or several candidates that you find suitable for the position.

[Link of the job advertisement](#)

[More info here](#)

We congratulate

Lisa Prahl Wittberg (Department of Engineering Mechanics) has been appointed as professor in fluid mechanics with specialization in Multiphase flows, November 2021

Zhi-Xun Shen (Stanford University) reappointed as a guest professor in quantum materials at the applied physics department, January 2022

Michael Liverts appointed as a docent in engineering mechanics with a specialization in fluid mechanics, October 2021

Recent Doctoral Graduates

Gerard Farré Puiggali (Department of Mathematics) Analytic AbC constructions in Hamiltonian dynamics and ergodic theory

Fredrik Fryklund (Department of Applied and Computational Mathematics) Integral equations and function extension techniques for numerical solution of PDEs

Bejan Hamawandi (Department of Physics) Synthesis and Characterization of Nanostructured Thermoelectric Materials

Emil Blomquist (Department of Physics) Strong Correlation Effects in Bosonic and Fermionic Systems Through an Unbiased Quantum Monte Carlo Approach

Philipp Rybakov (Department of Physics) Topological excitations in field theory models of superconductivity and magnetism

Andreas Bodén (Department of Biological Physics) 3D super-resolution microscopy of living cells using reversibly switchable fluorophores

Longbin Zhang (Department of Engineering Mechanics) Biomechanical Parameter Estimation for Wearable Exoskeleton System Design

Binbin Su (Department of Engineering Mechanics) Human Motion Prediction using Wearable Sensors and Machine Learning

August Brandberg (Department of Solid Mechanics) Micro-mechanical characterization and modeling of paper and paperboard

Recent Licentiate Exam

Priyank Gupta (Department of Solid Mechanics) On mechanical characterization and multiscale modeling of Lithium-ion batteries

FOLLOW US ON SOCIAL MEDIA



School of Engineering Sciences (SCI)

<https://intra.kth.se/en/scj>
info@sci.kth.se