



Editors network session #10

2022-08-30



Agenda

1. The end of Polopoly.
 2. A new tool for analytics at KTH
 3. Adjusted layout for department websites.
 4. A united administration – what does it mean for web editors?
 5. Workshop: Bring up your web issue for discussion.
-



Change CMS

Polopoly will be replaced. The procurement of a new CMS starts this autumn.

Why?

- No new development of the basic product Polopoly
- Limitations in the basic product make overall own development more difficult
- Sensitive to staff departures and weak external competence
- Outdated interface that lacks user-friendliness
- High thresholds for advanced users



Schedule

2022: Pre-study

2023: Procurement, implementation, technical development

2024: Content production and courses + a first launch of some pages.

2025: Continued migration of more web sites

2026-2027: Close Polopoly



Matomo på KTH

- Introduction of the web analytics service Matomo replaced Google Analytics in June, 2022.
- Open source system in local operation.
- Courses and adjustments this autumn.
- Contact Ulrika G if you want access to Matomo and course



Analytics

Some figures from last month in the following slides.





Energy – Applied thermodynamic

SIDANS URL ▲	SIDVISNINGAR	UNIKA SIDVISNINGAR	AVVISNINGSFREKVENNS	GENOMSNITTLIG TID PÅ SIDAN	UTFLÖDE	GENOMSNITT SIDLADDNINGSTID
☐ applied-thermodynamics	695	594	78 %	00:01:04	56 %	2,92s
🔗 /about-the-division-of-applied-thermodynamics-and-refrigerati...	3	3	0 %	00:00:10	0 %	0,49s
🔗 /applied-thermodynamics-and-refrigeration-contact-and-staff-1...	28	18	0 %	00:03:17	39 %	4,34s
🔗 /division-of-applied-thermodynamics-and-refrigeration-1.916653	9	4	100 %	00:01:22	75 %	0,56s
🔗 /events	1	1	0 %	00:00:04	100 %	0,73s
🔗 /key-research-areas	25	15	0 %	00:01:45	7 %	0,4s
🔗 /mscthesis	21	16	0 %	00:01:38	25 %	5,67s
🔗 /news	2	2	0 %	00:00:04	0 %	0,41s
🔗 /projects	21	14	0 %	00:00:31	21 %	0,49s
🔗 /publications	7	6	0 %	00:04:54	17 %	3,51s
🔗 /the-division-of-applied-thermodynamics-and-refrigeration-1.9...	6	2	0 %	00:01:51	0 %	0,36s
☐ co-operation	7	5	0 %	00:02:08	20 %	0,77s
☐ events	10	7	0 %	00:03:13	29 %	1,14s
☐ key-research-areas	414	376	83 %	00:00:44	61 %	3,2s
☐ mscthesis	3	3	50 %	00:00:07	67 %	11,37s
☐ news	15	13	80 %	00:02:00	62 %	3s
☐ projects	121	107	73 %	00:01:01	66 %	2,04s
☐ publications	2	2	0 %	00:00:15	0 %	1,61s



Energy Systems

SIDANS URL ▲	SIDVISNINGAR	UNIKA SIDVISNINGAR	AVVISNINGSFREKVEN	GENOMSnittlig TID PÅ SIDAN	UTFLÖDE	GENOMSnitt SIDLADDNINGSTID
☐ energy-systems	454	357	62 %	00:01:11	41 %	2,22s
🔗 /about-the-division-of-energy-systems-1.937036	8	5	0 %	00:00:48	0 %	23,16s
🔗 /completed-projects	12	9	0 %	00:01:06	11 %	1,16s
🔗 /current-projects	37	25	100 %	00:00:23	28 %	1,06s
🔗 /desa-news	15	9	0 %	00:00:34	0 %	2,96s
🔗 /desa-news?page=4	1	1	0 %	00:00:11	0 %	2,61s
🔗 /desa-news?page=8	1	1	0 %	00:00:19	0 %	0,56s
🔗 /desa-news?page=9	2	2	50 %	00:00:18	50 %	4,77s
🔗 /desa-news?page=10	1	1	0 %	00:00:17	0 %	0,56s
🔗 /desa-news?page=11	1	1	0 %	00:00:33	0 %	0,65s
🔗 /desa-news?page=12	1	1	0 %	00:00:20	0 %	0,57s
🔗 /desa-news?page=13	1	1	0 %	00:00:23	0 %	0,55s
🔗 /desa-news?page=14	1	1	0 %	00:00:00	100 %	0,64s
🔗 /division-of-energy-systems-1.937036	19	15	13 %	00:00:33	27 %	1,64s
🔗 /energy-systems-contact-and-staff-1.937038	43	29	33 %	00:01:19	41 %	0,89s
🔗 /master-thesis	35	26	0 %	00:00:27	4 %	0,47s
🔗 /publications-1.937040	12	9	0 %	00:00:20	22 %	3,42s
🔗 /the-division-of-energy-systems-1.937036	9	3	0 %	00:03:46	33 %	0,36s
🔗 /the-division-of-energy-systems-1.937036?_x_tr_sl=en&_x_tr_tl=...	1	1	0 %	00:00:50	0 %	5,49s
☐ completed-projects	50	46	73 %	00:02:08	76 %	3,66s
☐ current-projects	75	64	74 %	00:02:17	59 %	1,3s
☐ desa-news	31	28	63 %	00:00:28	75 %	2,44s
☐ master-thesis	97	78	65 %	00:00:47	29 %	1,56s
☐ research-areas	1	1	0 %	00:00:02	0 %	1,45s



Heat and power technology

SIDANS URL ▲	SIDVISNINGAR	UNIKA SIDVISNINGAR	AVVISNINGSFREKVENNS	GENOMSnittlig TID PÅ SIDAN	UTFLÖDE	GENOMSnitt SIDLADDNINGSTID
☐ heat-and-power-technology	292	224	52 %	00:01:05	37 %	1,97s
🔗 /about-the-division-of-heat-and-power-technology-1.1025523	1	1	0 %	00:00:14	0 %	0,4s
🔗 /completed-projects	12	10	0 %	00:00:09	0 %	0,37s
🔗 /contact-and-staff-1.916754	54	29	33 %	00:01:20	62 %	1,65s
🔗 /current-projects	33	25	0 %	00:00:21	4 %	0,42s
🔗 /ekv-researchgroups	2	2	0 %	00:00:08	0 %	0,31s
🔗 /laboratory-of-the-unit-of-heat-and-power-technology-1.920120	16	15	0 %	00:01:34	7 %	1,05s
🔗 /publications-1.916759	17	16	0 %	00:01:49	38 %	1,14s
🔗 /the-division-of-heat-and-power-technology-1.1025523	9	1	0 %	00:01:48	0 %	0,31s
☐ completed-projects	11	10	50 %	00:00:25	40 %	2,23s
☐ current-projects	92	76	55 %	00:01:17	50 %	2,42s
☐ ekv-researchgroups	45	39	46 %	00:00:48	36 %	3,52s



HPU (old site)

SIDANS URL ▲	SIDVISNINGAR	UNIKA SIDVISNINGAR	AVVISNINGSFREKVENS	GENOMSNITTLIG TID PÅ SIDAN	UTFLÖDE	GENOMSNITT SIDLADDNINGSTID
hpu	160	121	59 %	00:01:07	32 %	1,55s
/about-us	2	2	0 %	00:05:47	0 %	0,22s
/calendar	1	1	0 %	00:00:03	0 %	0,26s
/calendar?date=2022-08-01&length=31	1	1	0 %	00:00:08	0 %	0,13s
/calendar?date=2022-09-01&length=30	1	1	0 %	00:00:02	0 %	0,25s
/department-of-sustainable-production-development-1.844383	17	13	33 %	00:00:15	23 %	1,96s
/education	6	5	0 %	00:00:46	0 %	0,56s
/news	1	1	0 %	00:00:07	0 %	0,97s
/research	8	5	0 %	00:00:07	0 %	0,4s
/sustainable-production-development-contact-and-staff-1.8480...	16	8	33 %	00:01:40	63 %	1,15s
about-us	4	3	0 %	00:00:10	33 %	0,39s
calendar	1	1	0 %	00:00:04	0 %	0,27s
education	3	3	0 %	00:00:11	0 %	0,31s
news	14	12	60 %	00:03:28	67 %	2,03s
research	85	65	75 %	00:00:57	34 %	1,72s



IPU (new website)

SIDANS URL ▲	SIDVISNINGAR	UNIKA SIDVISNINGAR	AVVISNINGSFREKVENNS	GENOMSnittlig TID PÅ SIDAN	UTFLÖDE	GENOMSnitt SIDLADDNINGSTID
☰ ipu	302	235	69 %	00:00:42	20 %	1,61s
🔗 /about	11	8	0 %	00:00:05	0 %	0,43s
🔗 /co-operation	2	2	0 %	00:00:07	0 %	1,16s
🔗 /department-of-production-engineering-1.1160734	29	23	67 %	00:00:14	22 %	1,14s
🔗 /education	7	6	0 %	00:00:12	0 %	0,44s
🔗 /infrastructure	4	4	0 %	00:00:12	0 %	0,31s
🔗 /manuel-welsch-1.292165	1	1	0 %	00:04:12	0 %	0,45s
🔗 /news-events	7	6	0 %	00:00:53	0 %	0,59s
🔗 /production-engineering-1.1160734	34	22	0 %	00:00:58	9 %	0,6s
🔗 /research	18	11	0 %	00:00:13	18 %	0,82s
⊕ about	17	11	0 %	00:01:39	9 %	0,89s
⊕ co-operation	1	1	0 %	00:00:16	0 %	0,59s
⊕ education	1	1	0 %	00:00:03	0 %	0,42s
⊕ news-events	35	30	75 %	00:00:49	63 %	2,41s
⊕ research	135	109	100 %	00:00:43	17 %	1,04s



Hultgren Lab

SIDANS URL ▲	SIDVISNINGAR	UNIKA SIDVISNINGAR	AVVISNINGSFREKVENNS	GENOMSNITTLIG TID PÅ SIDAN	UTFLÖDE	GENOMSNIITT SIDLADDNINGSTID
☰ hultgrenlab	154	133	46 %	00:01:01	27 %	1,61s
🔗 /about	3	3	0 %	00:00:27	0 %	0,48s
🔗 /for-academy	10	9	50 %	00:00:58	33 %	0,63s
🔗 /for-industry	2	2	0 %	00:01:46	0 %	0,55s
🔗 /hultgren-laboratory-1.1046051	10	10	22 %	00:00:57	20 %	3,43s
🔗 /our-services	10	8	0 %	00:00:04	25 %	0,58s
☰ about	16	14	0 %	00:02:39	29 %	0,87s
☰ for-academy	5	5	0 %	00:00:13	0 %	0,33s
☰ for-industry	7	6	0 %	00:03:02	17 %	0,37s
☰ our-services	91	76	56 %	00:00:44	32 %	1,53s






INDEK

SIDANS URL ▲	SIDVISNINGAR	UNIKA SIDVISNINGAR	AVVISNINGSFREKVENNS	GENOMSNTTLIG TID PÅ SIDAN	UTFLÖDE	GENOMSNTT SIDLADDNINGSTID
📄 indek	1 587	1 069	35 %	00:01:03	24 %	1,45s
🔗 /about	52	30	0 %	00:00:19	3 %	0,39s
🔗 /afc	61	37	0 %	00:01:05	8 %	0,5s
🔗 /cesis	3	3	0 %	00:02:56	0 %	0,52s
🔗 /co-operation-1.993956	9	6	0 %	00:00:31	0 %	0,32s
🔗 /contact	27	16	0 %	00:00:35	19 %	0,71s
🔗 /education	67	34	0 %	00:00:37	6 %	0,29s
🔗 /index	16	10	20 %	00:01:54	20 %	1,33s
🔗 /industrial-economics-and-management-1.956412	122	69	45 %	00:00:55	52 %	2,35s
🔗 /kalender	9	7	0 %	00:00:24	0 %	0,67s
🔗 /kalender?date=2022-09-01&length=30	2	1	0 %	00:00:06	0 %	0,14s
🔗 /kalender?date=2022-10-01&length=31	1	1	0 %	00:00:04	0 %	0,27s
🔗 /mt	60	44	100 %	00:00:16	16 %	1,21s
🔗 /nyheter	7	6	0 %	00:00:15	0 %	0,84s
🔗 /nyheter?page=2	1	1	0 %	00:00:21	0 %	1,88s
🔗 /nyheter?page=3	1	1	0 %	00:00:15	0 %	0,45s
🔗 /research	67	36	0 %	00:00:34	8 %	0,36s
🔗 /side	69	49	0 %	00:00:56	8 %	0,55s
📁 about	65	48	29 %	00:01:15	23 %	0,35s
📁 afc	53	39	0 %	00:00:23	18 %	1,36s
📁 cesis	1	1	0 %	00:00:56	0 %	0,36s
📁 contact	25	20	0 %	00:02:02	25 %	0,94s
📁 education	347	251	30 %	00:01:32	30 %	1,23s
📁 kalender	14	10	0 %	00:00:10	20 %	0,46s
📁 mt	122	80	75 %	00:01:14	28 %	1,75s
📁 nyheter	55	46	50 %	00:00:49	65 %	2,01s
📁 research	144	79	0 %	00:01:31	10 %	1,02s
📁 side	187	144	30 %	00:00:44	23 %	2,94s



Learning

SIDANS URL ▲	SIDVISNINGAR	UNIKA SIDVISNINGAR	AVVISNINGSFREKVENNS	GENOMSNITTLIG TID PÅ SIDAN	UTFLODE	GENOMSnitt SIDLADDNINGSTID
larande	7 029	4 459	48 %	00:01:07	43 %	1,61s
vh   	52	47	36 %	00:00:28	70 %	1,01s
utbildning	30	27	25 %	00:02:19	33 %	0,9s
stem	103	96	83 %	00:00:21	80 %	1,05s
sprak	6 149	3 770	45 %	00:01:07	42 %	1,93s
projekt	10	9	67 %	00:02:46	67 %	2,43s
om-oss	17	14	0 %	00:00:53	14 %	0,82s
larande-impact	6	5	0 %	00:04:16	60 %	1,35s
kontakt	25	16	0 %	00:01:54	38 %	2,11s
forskning	146	105	53 %	00:01:35	33 %	1,34s
dl	136	107	44 %	00:01:03	46 %	0,91s
aktuellt	169	130	68 %	00:01:10	72 %	0,76s
/vh	2	2	0 %	00:00:07	50 %	0,5s
/utbildning	20	16	0 %	00:00:37	6 %	0,35s
/stem	7	6	0 %	00:00:11	0 %	0,48s
/sprak	79	51	43 %	00:00:25	16 %	0,67s
/om-oss	18	13	100 %	00:01:28	15 %	0,45s
/nyhet-till-larande-1.1150800	12	10	67 %	00:03:11	90 %	1,08s
/larande-impact	2	2	0 %	00:10:20	0 %	0,31s
/kontakt	13	8	0 %	00:00:52	0 %	0,32s
/institutionen-for-larande-1.804157	2	2	0 %	00:00:14	50 %	0,49s
/forskning	9	8	0 %	00:00:21	0 %	0,29s
/dl	7	5	0 %	00:00:15	40 %	0,41s
/aktuellt?page=3	1	1	0 %	00:00:08	0 %	0,15s
/aktuellt?page=2	1	1	0 %	00:00:15	0 %	0,24s
/aktuellt	13	8	50 %	00:01:12	25 %	0,53s



Language & Communication

SIDANS URL ▲	SIDVISNINGAR	UNIKA SIDVISNINGAR	AVVISNINGSFREKVENNS	GENOMSITTIG TID PÅ SIDAN	UTFLODE	GENOMSITT SIDLADDNINGSTID
☰ språk	6 125	3 752	45 %	00:01:07	42 %	1.93s
☑ /aktuellt	21	11	0 %	00:00:14	9 %	0.34s
☑ /certifikat-i-global-kompetens-1.823902	101	85	70 %	00:01:35	59 %	0.84s
☑ /for-anstallda	39	21	25 %	00:01:19	33 %	0.7s
☑ /for-internationella-studenter	24	20	0 %	00:00:09	10 %	0.35s
☑ /for-programstudenter	186	130	13 %	00:00:37	15 %	0.8s
☑ /forskning	22	15	0 %	00:00:27	7 %	0.38s
☑ /kommunikationsmoment	25	16	0 %	00:00:24	19 %	0.29s
☑ /kontakt-1.809137	29	25	25 %	00:01:50	28 %	1.23s
☑ /kontakt-1.1184880	28	14	100 %	00:02:10	21 %	0.29s
☑ /kurser	69	56	0 %	00:00:16	7 %	0.54s
☑ /om	24	14	0 %	00:00:09	7 %	0.22s
☑ /sprak-och-kommunikation-kontakt-och-personal-1.1184880	2	1	0 %	00:00:46	0 %	0.22s
☑ /sprak-och-kommunikation-pa-kth-1.804293	87	66	20 %	00:00:31	9 %	0.82s
☑ /sprak-och-kommunikation-pa-kth-1.1180036	52	9	0 %	00:00:39	11 %	0.33s
☑ /sprakcafeer	36	26	50 %	00:00:19	23 %	0.24s
☑ /tandem	104	72	0 %	00:00:44	22 %	0.49s
☑ /uppdragsutbildning-1.810533	19	13	0 %	00:00:59	8 %	0.3s
☑ /utbildning	63	17	0 %	00:01:00	0 %	0.4s
☰ aktuellt	16	11	0 %	00:00:34	9 %	0.26s
☰ for-internationella-studenter	1 885	1 111	50 %	00:01:22	70 %	5.72s
☑ /master-och-utbytesstudenter-1.813001	19	5	0 %	00:00:39	0 %	0.13s
☑ /masterstudenter	20	15	0 %	00:00:11	0 %	0.47s
☑ /virtuellt-utbyte-for-studenter-inom-unite-1.1125718	5	3	100 %	00:00:11	33 %	1.42s
☰ masterstudenter	1 839	1 088	50 %	00:01:23	72 %	5.76s
☰ for-programstudenter	3	3	0 %	00:00:07	33 %	0.47s
☰ forskning	12	10	100 %	00:00:05	10 %	0.76s
☰ kommunikationsmoment	123	42	50 %	00:01:11	14 %	0.49s
☰ kurser	1 410	1 037	42 %	00:01:21	43 %	0.86s



Machine Design

SIDANS URL ▲	SIDVISNINGAR	UNIKA SIDVISNINGAR	AVVISNINGSFREKVENNS	GENOMSNITTIG TID PÅ SIDAN	UTFLODE	GENOMSNITT SIDLADDNINGSTID
mmk	1 074	867	48 %	00:00:55	37 %	1.56s
/about-us	22	17	0 %	00:00:10	18 %	0.36s
/co-operation-1.983220	3	1	0 %	00:00:11	0 %	0.82s
/contact	25	19	100 %	00:02:04	32 %	1.37s
/department-of-machine-design-1.974324	72	58	19 %	00:00:41	19 %	1.49s
/education	27	24	0 %	00:00:09	0 %	0.39s
/integrated-product-development	24	20	0 %	00:01:35	15 %	0.6s
/kalender	15	6	0 %	00:00:09	0 %	0.24s
/kalender?date=2022-05-01&length=31	1	1	0 %	00:00:08	0 %	0.2s
/kalender?date=2022-06-01&length=30	1	1	0 %	00:00:05	0 %	0.22s
/kalender?date=2022-07-01&length=31	1	1	0 %	00:00:02	0 %	0.23s
/kalender?date=2022-08-22&length=1	1	1	0 %	00:00:07	0 %	0.27s
/kalender?date=2022-08-23&length=1	4	2	0 %	00:01:29	0 %	0.31s
/kalender?date=2022-09-01&length=30	2	2	0 %	00:00:01	50 %	0.16s
/kalender?date=2022-10-01&length=31	1	1	0 %	00:00:03	0 %	0.17s
/kalender?date=2022-10-06&length=1	1	1	0 %	00:00:04	0 %	0.17s
/mechatronics	38	29	100 %	00:00:43	14 %	0.77s
/nyheter	5	4	100 %	00:00:10	50 %	0.68s
/research	17	13	0 %	00:00:12	0 %	0.43s
/systems-component-design	27	19	100 %	00:00:21	16 %	0.45s
about-us	7	6	100 %	00:00:04	67 %	7.89s
contact	22	17	50 %	00:01:41	35 %	0.94s
education	307	261	48 %	00:00:59	54 %	1.46s
integrated-product-development	44	36	43 %	00:01:38	22 %	1.25s
kalender	38	30	50 %	00:00:38	10 %	0.62s
mechatronics	251	203	54 %	00:00:58	41 %	1.82s
nyheter	30	28	52 %	00:00:36	54 %	2.56s
research	7	4	0 %	00:00:14	25 %	0.39s
systems-component-design	81	62	60 %	00:01:01	39 %	1.67s



Unit of Process

SIDANS URL ▲	SIDVISNINGAR	UNIKA SIDVISNINGAR	AVVISNINGSFREKVENS	GENOMSnittlig TID PÅ SIDAN	UTFLÖDE	GENOMSnitt SIDLADDNINGSTID
☰ process	322	252	56 %	00:01:13	27 %	1,57s
🔗 /about-the-unit-of-processes-1.983322	6	5	0 %	00:00:47	0 %	0,31s
🔗 /lab-facilities	17	14	0 %	00:02:40	36 %	0,86s
🔗 /news	4	4	0 %	00:00:11	25 %	0,34s
🔗 /processes-contact-and-staff-1.966995	22	14	0 %	00:01:32	36 %	3,12s
🔗 /projects	15	12	0 %	00:00:09	0 %	0,54s
🔗 /publications-1.936757	12	10	100 %	00:05:09	40 %	2,61s
🔗 /research-areas	16	10	0 %	00:00:30	10 %	1,39s
⊕ lab-facilities	37	26	0 %	00:01:13	4 %	1,85s
⊕ projects	67	60	60 %	00:00:35	33 %	1,17s
⊕ research-areas	126	97	63 %	00:01:11	31 %	1,21s



Unit of Properties

SIDANS URL ▲	SIDVISNINGAR	UNIKA SIDVISNINGAR	AVVISNINGSFREKVENNS	GENOMSNITTLIG TID PÅ SIDAN	UTFLÖDE	GENOMSNIITT SIDLADDNINGSTID
☰ properties	315	231	53 %	00:00:56	35 %	1,49s
🔗 /applied-material-physics	17	14	0 %	00:00:14	7 %	0,62s
🔗 /current-projects	26	14	25 %	00:01:23	7 %	1,33s
🔗 /enheten-for-egenskaper-1.722772	14	10	67 %	00:00:05	30 %	1,95s
🔗 /materials-technology	14	10	0 %	00:02:14	20 %	0,97s
🔗 /measurements-of-properties	9	5	0 %	00:00:09	20 %	0,3s
🔗 /mechanical-metallurgy	25	14	0 %	00:00:26	21 %	0,56s
🔗 /properties-contact-and-staff-1.967008	49	35	0 %	00:01:25	51 %	0,68s
🔗 /publications-1.1069345	12	11	0 %	00:00:29	27 %	4,02s
⊕ applied-material-physics	53	48	52 %	00:00:35	50 %	2,06s
⊕ current-projects	64	44	45 %	00:01:19	36 %	1,23s
⊕ materials-technology	14	11	100 %	00:00:16	27 %	1,43s
⊕ measurements-of-properties	10	9	100 %	00:00:10	44 %	1,76s
⊕ mechanical-metallurgy	8	6	50 %	00:01:53	50 %	3,22s



Unit of Structures

SIDANS URL ▲	SIDVISNINGAR	UNIKA SIDVISNINGAR	AVVISNINGSFREKVENS	GENOMSnittlig TID PÅ SIDAN	UTFLÖDE	GENOMSnitt SIDLADDNINGSTID
☰ structures	115	87	60 %	00:00:40	32 %	1,59s
🔗 /ab-initio-atomistic-modelling	5	4	100 %	00:00:04	50 %	9,07s
🔗 /computational-thermodynamics	5	4	0 %	00:00:26	25 %	0,43s
🔗 /enheten-for-strukturer-1.722814	11	9	0 %	00:00:16	0 %	2,02s
🔗 /experimental-techniques	15	9	0 %	00:00:57	11 %	1,51s
🔗 /mjukvarupaket-1.755049	6	3	0 %	00:00:18	33 %	0,35s
🔗 /nanotechnology	5	5	0 %	00:00:25	0 %	0,46s
🔗 /phase-transformations-structure-evolution	16	14	0 %	00:01:01	21 %	0,71s
🔗 /structures-contact-and-staff-1.967002	26	17	0 %	00:01:09	47 %	0,75s
⊕ ab-initio-atomistic-modelling	6	5	100 %	00:00:22	20 %	0,38s
⊕ computational-thermodynamics	14	11	86 %	00:00:14	73 %	3,28s
⊕ experimental-techniques	2	2	0 %	00:00:14	50 %	1,64s
⊕ nanotechnology	1	1	0 %	00:01:01	0 %	0,44s
⊕ phase-transformations-structure-evolution	3	3	100 %	00:00:20	67 %	1,04s

Internal department pages

SIDANS URL ▲	SIDVISNINGAR	UNIKA SIDVISNINGAR	AVVISNINGSFREKVENS	GENOMSnittlig TID PÅ SIDAN	UTFLÖDE	GENOMSnitt SIDLADDNINGSTID
☰ institutioner	183	43	11 %	00:00:19	44 %	0,44s
🔗 /internt-mmk	20	5	0 %	00:00:05	0 %	0,33s
🔗 /internt-mse	2	1	0 %	00:00:09	0 %	0,22s
☰ hpu	45	18	17 %	00:00:18	72 %	0,7s
☰ internt-indek	12	1	0 %	00:00:33	0 %	0,19s
☰ internt-mmk	20	10	0 %	00:00:12	30 %	0,5s
☰ internt-mse	84	8	0 %	00:00:23	38 %	0,31s



New department web layout

- Energy Technology + new division page + master thesis
- Language and communication (extra inspiration)

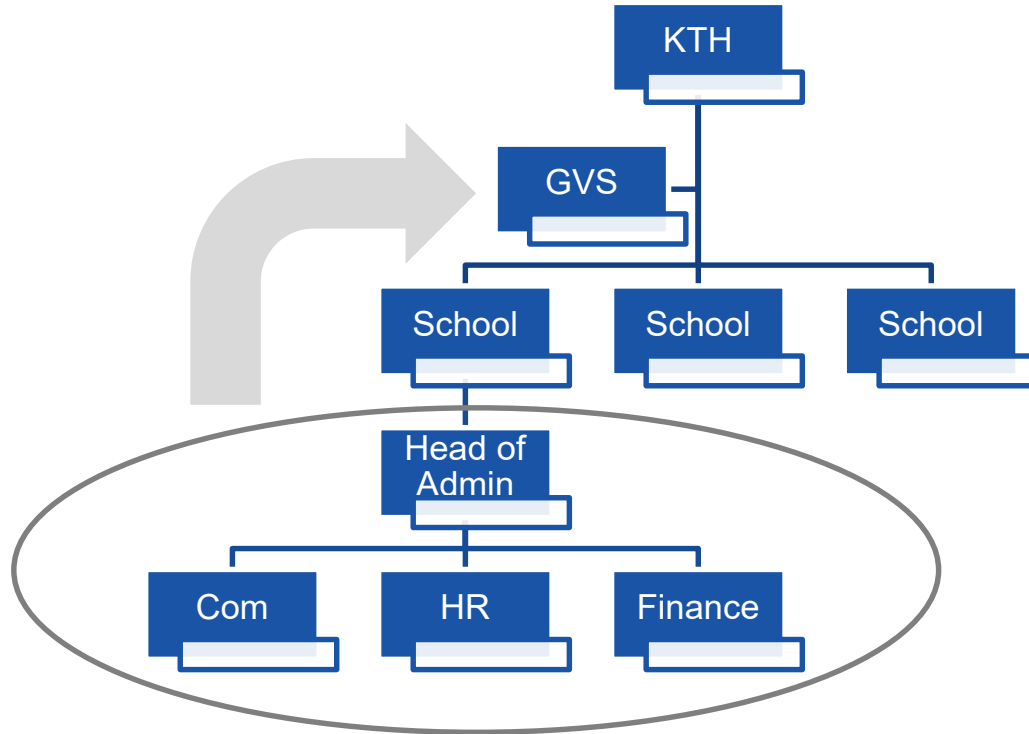
What is new?

- Fewer entrances in left navigation
- A new start page
- Intranet in second header

Ulrika will implement the department layout like Energy's on more departments in dialogue with each web master.



A merged administration from 2023-01-01





News for web editors

- Two new online courses: web editing and digital content.
- Clearer roles.
- Later on, a wider network of web editors at all KTH.

Webbansvariga

Redaktörer

Verksamhetsrepresentanter

Övergripande ansvariga

Huvudingångsansvariga

Skolwebbsansvariga

Delwebbplatsansvarig

Webbredaktör

Områdesansvarig

Innehållsansvarig

Finally, some information

- New version of the KTH dictionary:
<https://www.kth.se/social/group/sprakkommitten/post/ny-version-av-kth-ordboken-arets-uppdater-3/>
-

Case discussion & questions

Tack för att ni deltog!

Ulrika Georgsson

Communications Officer &
Coordinator of the ITM
School's websites

ulrikage@kth.se

087907635

[Profile](#)

